



**CRADLE TO CAREER**  
FRESNO COUNTY



fresno county  
superintendent of schools  
Dr. Michele Cantwell-Copher, Superintendent



**Our Kids.  
Our Valley.  
Our Future.**

**2022  
Community Data Report**

## A Message from Linda Gleason



Since launching Fresno C2C in 2016, we have been moving at the speed of trust and steadily building the collaborative infrastructure needed to measurably improve outcomes for our children and their families. The C2C Partnership Table represents seventy-one organizations across ten sectors, all with the shared vision highlighted in our Guiding Principles. The third principle - collect and connect data - is one of the ways that partners hold themselves accountable.

In the quest to focus on outcomes we need to understand what is working at the program or project level and have a bigger picture of what is happening in our systems. There are many ingredients that contribute to measurably improve the outcomes illustrated in the **Fresno Cradle to Career Core Indicators** (highlighted on page 2). The ultimate goal is to be sure that work underway is explicitly connected to moving indicators at all levels over time.

Moving from instinct to evidence, setting baselines and targets, innovating and improving outcomes is what Fresno C2C is all about. This report highlights the variety of indicators being tracked across our collaborative work. Our data includes both the quantitative numbers and the qualitative information essential to knowing we are having the impacts that we are after.

Thanks to all of our C2C partners for their tireless commitment to measurably improving outcomes for all children and families.

### \*\*\* GUIDING PRINCIPLES \*\*\*

**Advance Equity | Engage the Community | Encourage Collaboration**  
**Collect and Connect Data | Leverage and Align Resources**

## Fresno C2C Receives Systems Change Designation from StriveTogether

Thanks to the hard work of our partners and backbone staff, Fresno C2C has received the Systems Change designation along the StriveTogether Theory of Action. This achievement is important for us as a partnership and as part of the national cradle to career network. Our commitment to a shared vision, collecting and connecting data, collaborative action and sustainability were all part of reaching this milestone. Systems Change communities are also shifting policies, practices, resources, and power structures to achieve equitable outcomes for children and families. Thanks to all partners for the time and talent you have given to support Fresno C2C!



# NETWORK AT-A-GLANCE

Nearly  
**362,000**  
Total Number of Children Served  
Across Fresno County



**10**

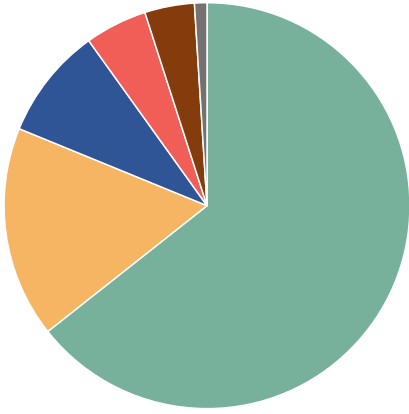
**Partnership Sectors**

- EARLY LEARNING
- EDUCATION K-12
- HIGHER EDUCATION
- HOUSING
- HEALTH
- PHILANTHROPY
- COMMUNITY BENEFIT ORGANIZATIONS
- BUSINESS
- JUSTICE
- LOCAL GOVT PUBLIC AGENCIES



**71**

**Partner Organizations**



**59%**  
of the  
Population  
is under 35



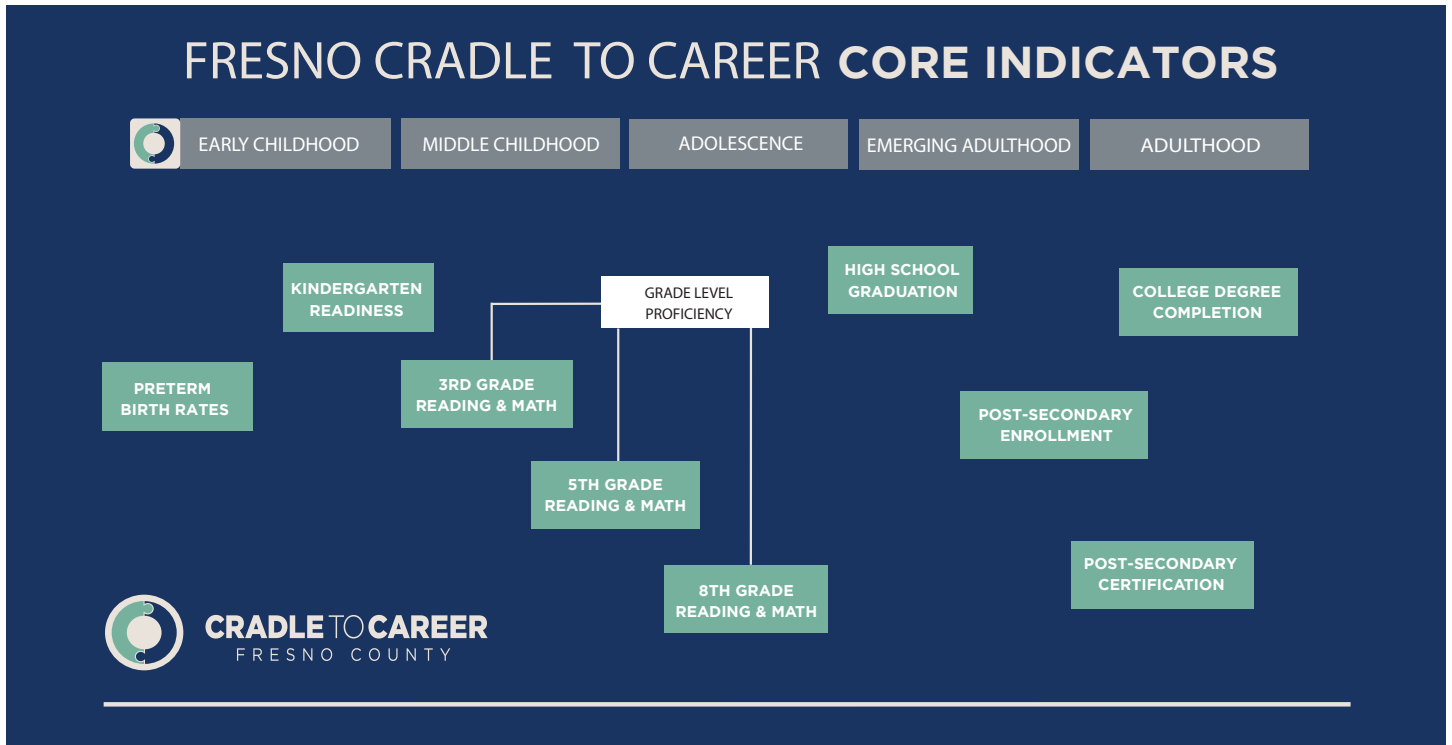
**38%**  
of the Youth  
Experience  
Poverty

**Youth By Demographic**

- 65% Latino
- 5% Black
- 17% White
- 2% Two Races
- 9% Asian
- >1% American Indian

# C2C CORE INDICATORS

The **Fresno Cradle to Career Core Indicators** illustrate the outcomes across the life course that contribute to economic stability and mobility. We have been reporting these indicators since the launch of Fresno C2C in 2016 and our ultimate goal is sustained improvement over time.



## Preterm Birth Rates

Source: Fresno County Public Health, Maternal, Child and Adolescent Health (2021)

	2015	2016	2017	2018	2019	2020	2021
<b>Black</b>	15%	13%	13%	13%	15%	16%	15%
<b>Asian</b>	11%	8%	10%	9%	8%	10%	11%
<b>Hispanic / Latino</b>	10%	10%	9%	9%	10%	10%	10%
<b>White</b>	9%	8%	8%	9%	9%	9%	10%



“Realizing the impact of the pandemic on educational outcomes, now is the time to fortify and accelerate our cross-sector collaborative work and hold ourselves accountable for measured improvement. Together we have everything we need and our future depends on it.”

- Dr. Michele Cantwell-Copher  
Fresno County Superintendent of Schools



## Kindergarten Readiness (DRDP)

The chart below shows the percentage of students who reach the highest two levels on selected domains from the Desired Results Development Profile (DRDP). *Source: FCSS, Spring 2022 DRDP Data retrieved from Fresno Unified School District*

	2017	2019	2022		2017	2019	2022
Phonological Awareness	37%	35%	35%	Letter and Word Knowledge	56%	51%	49%
Number Sense of Math Operations	44%	42%	44%	Patterning	55%	52%	55%
Comprehension of Age-Appropriate Text	46%	44%	46%	Engagement and Persistence	57%	53%	58%
Self-Control of Feelings and Behavior	45%	45%	48%	Number Sense of Quantity	57%	54%	52%
Reciprocal Communication and Conversation	51%	47%	50%	Nutrition	60%	55%	64%
Classification	51%	48%	49%	Fine Motor Manipulative Skills	69%	65%	66%
Social and Emotional Understanding	49%	49%	51%	Gross Motor Manipulative Skills	71%	68%	69%
Relationship/Interactions with Familiar Adults	49%	49%	55%	Self-Expression in English	76%	77%	69%
Communication and Use of Language	54%	51%	52%	Active Physical Play	79%	77%	77%

## Third Grade Reading

The chart below shows the percentage of 3rd grade students who meet/exceed the SBAC reading standard.

*Source: CDE, Dataquest (2022)*

	2015	2016	2017	2018	2019	2021	2022
State of California	38%	43%	44%	48%	49%	40%	42%
Fresno County	31%	38%	41%	47%	46%	24%	37%
Asian	37%	45%	49%	56%	54%	32%	43%
Black	19%	24%	27%	32%	34%	18%	24%
Hispanic / Latino	25%	31%	35%	41%	41%	21%	31%
White	53%	62%	63%	65%	65%	48%	57%
Low Income	24%	30%	34%	39%	39%	21%	29%
English Language Learner	12%	13%	17%	21%	16%	11%	17%

## Eighth Grade Math

The chart below shows the percentage of 8th grade students who meet/exceed the SBAC math standard.

*Source: CDE, Dataquest (2022)*

	2015	2016	2017	2018	2019	2021	2022
State of California	33%	36%	36%	37%	37%	31%	29%
Fresno County	27%	29%	30%	30%	32%	20%	24%
Asian	43%	44%	46%	48%	47%	42%	39%
Black	12%	13%	15%	15%	16%	9%	10%
Hispanic / Latino	18%	22%	22%	22%	25%	17%	18%
White	52%	50%	49%	50%	50%	41%	44%
Low Income	20%	21%	21%	22%	24%	16%	17%
English Language Learner	3%	3%	4%	4%	4%	1%	2%

## High School Graduation

The chart below shows cohort graduation rate percentages for Regular HS Diploma Graduates, based on various demographics.

Source: CDE, Dataquest (2022)

	2016-17	2017-18	2018-19	2019-20	2020-21
<b>State of California</b>	83%	83%	85%	84%	84%
<b>Fresno County</b>	81%	82%	82%	80%	81%
<b>American Indian or Alaska Native</b>	73%	68%	78%	63%	69%
<b>Asian</b>	91%	92%	92%	90%	91%
<b>Black</b>	74%	73%	69%	75%	71%
<b>Hispanic / Latino</b>	78%	80%	80%	78%	80%
<b>Native Hawaiian / Pacific Islander</b>	79%	86%	81%	97%	82%
<b>White</b>	86%	86%	86%	86%	85%
<b>Multi-Racial</b>	79%	77%	78%	76%	77%
<b>Low Income</b>	77%	78%	79%	77%	79%
<b>English Language Learner</b>	69%	70%	69%	66%	69%

"We are committed to this cross sector partnership where we are measuring impact and better able to align funding aimed at our shared goals."

- Jeffrey Nkansah, CEO, CalViva Health



## Fresno State First-Time Freshman Enrollment

	FALL 2019	FALL 2020	FALL 2021
<b>Black</b>	113	133	151
<b>American Indian</b>	15	12	6
<b>Asian</b>	475	480	481
<b>Hispanic / Latino</b>	1,906	2,281	2,131
<b>Non-Resident</b>	109	124	114
<b>Multi-Racial</b>	101	91	80
<b>Unknown</b>	60	73	61
<b>White</b>	554	491	419
<b>Pacific Islander</b>	0	8	7
<b>Overall</b>	3333	3693	3450

## Six-Year Graduation Rates Fall 2008 to Fall 2015 Cohort

	Headcount	% by Race / Ethnicity	% of Total
<b>White</b>	5,282	65.7%	22.1%
<b>Unknown</b>	935	59.4%	3.9%
<b>Multi-Racial</b>	700	57.6%	2.9%
<b>Hispanic / Latino</b>	11,065	54.7%	46.3%
<b>Pacific Islander</b>	70	54.3%	0.3%
<b>Non-Resident</b>	697	53.1%	2.9%
<b>Asian</b>	3,931	48.6%	16.5%
<b>Black</b>	1,130	46.2%	4.7%
<b>American Indian</b>	78	46.2%	0.3%
<b>Overall</b>	23,888	55.9%	100.0%

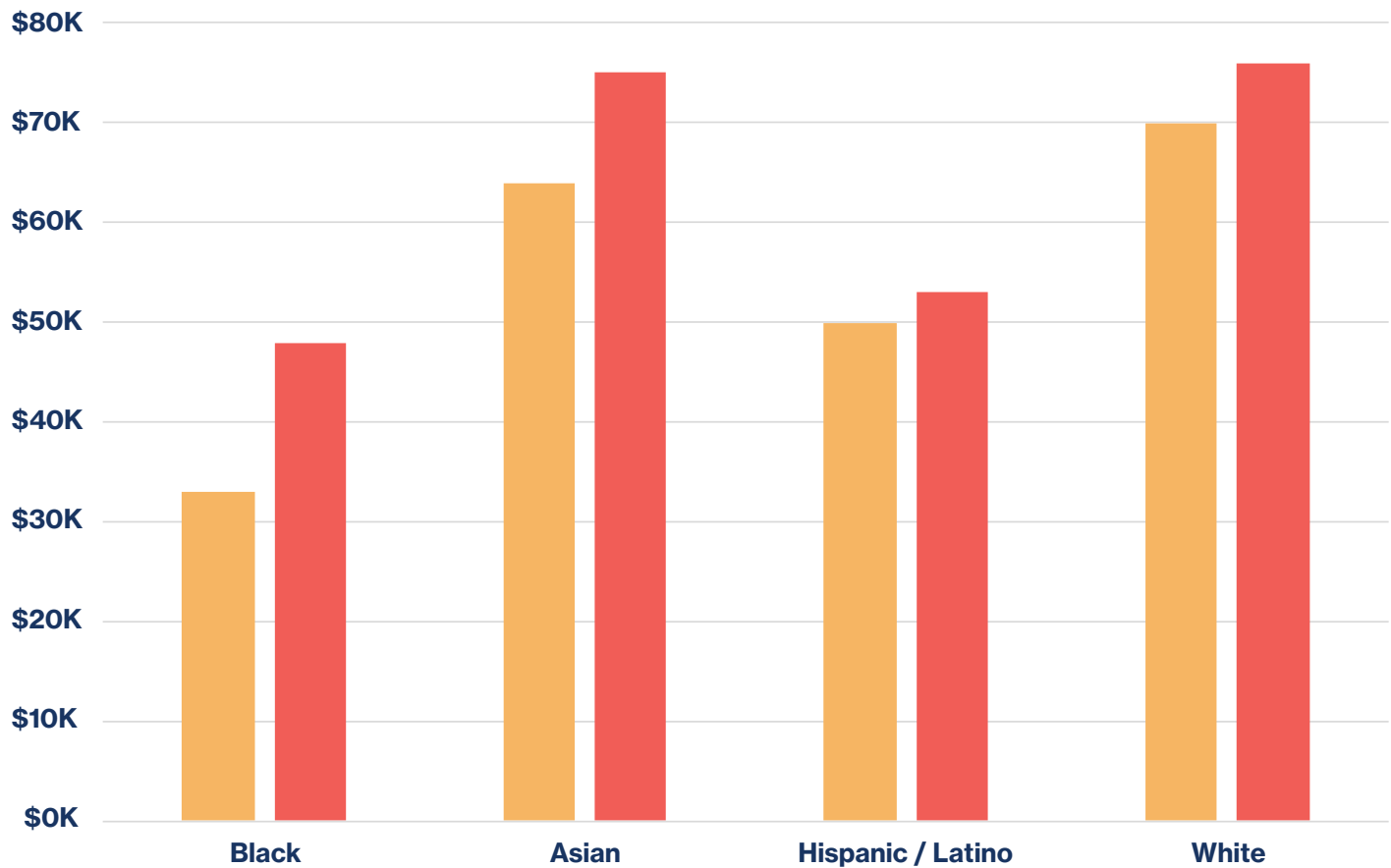
# SYSTEMS LEVEL INDICATORS

Employment, Income Levels and Digital Inclusion

Systems indicators help illuminate structural barriers or systemic inequities. A focus on indicators at this level supports better understanding of how systemic inequities can perpetuate opportunity gaps. Systems level indicators being tracked include income inequality and internet access.

## Household Median Income in Fresno County

● 2019 ● 2021





# The Fresno Coalition for Digital Inclusion

The Fresno Coalition for Digital Inclusion (FCDI), convened by Fresno C2C, builds on 15+ years of work by multiple local experts with deep knowledge of the challenges and solutions needed for countywide internet access. Systems level data collection is laying the foundation for the advocacy and policy efforts needed to ensure broadband for all in our county. For more info please go to [connectfresno.org](http://connectfresno.org).

Real-time data is being gathered using the speed testing app My Quality of Internet (MyQoI). The real-time data gathered through MyQoI reveals that Federal Communications Commission and California Public Utilities Commission maps vastly overstate service quality, availability, and adoption in urban areas of poverty and rural areas.

**Challenge of Inaccurate Data Guiding Investments and Constraining Funding**

Current FCC map shows Fresno County is highly "served" with multiple options for broadband. FCC map uses the carriers' claims of service availability.

Comparison of Maps/Data on Unserved Residents		
Data Source	Unserved	Unserved Residents
FCC 2022	2.3%	9,300
CPUC 2022	3%	12,000
Census 2020	17%	174,000
Microsoft 2020	50%	489,000



**Underrepresenting the Need + Deprioritizing Funding for those in Urban Poverty & Low-income Multi-Dwelling Units**

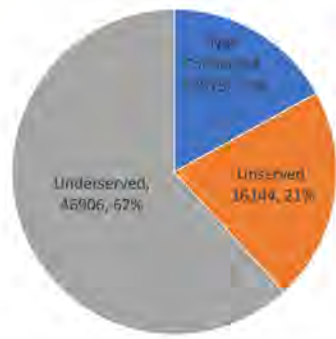
Image Shows heatmap of Fresno Unified underserved students who receive less than 25 Mbps for at least 25% of measurements. From myQoI app from June 2021.

Comparison of Maps/Data on Unserved Residents		
Data Source	Unserved	Unserved Residents
FCC 2022	2.3%	9,300
Fresno Unified students and their households as percent of the City of Fresno	14.5%	72,547

**Impact on Education, Workforce, Healthcare, and Social Mobility**

Graph Shows myQoI, "my Quality of Internet", measurement results since June 2021 for Fresno Unified students based upon the laptop's internet access and speeds ...

- Not Connected: no internet beyond school
- Unserved: experienced < 25 Mbps
- Underserved: experienced < 100 Mbps



myQoI 1) installed on district-issued laptops, 2) measures location, speeds, carrier, 3) at 9:30 am, 3:00 pm and 7:00 pm. For underserved and unserved, analytics counts students that experienced low quality for more than 20% of the time.



"Having real time data that tells the truth about internet access and a focus on digital literacy are foundational to insuring equitable broadband for all in Fresno County. United Way Fresno Madera County is proud to be a leading partner in the Fresno Coalition for Digital Inclusion."

- Lindsay Fox,  
President and CEO,  
United Way Fresno and  
Madera Counties



# CONTRIBUTING INDICATORS

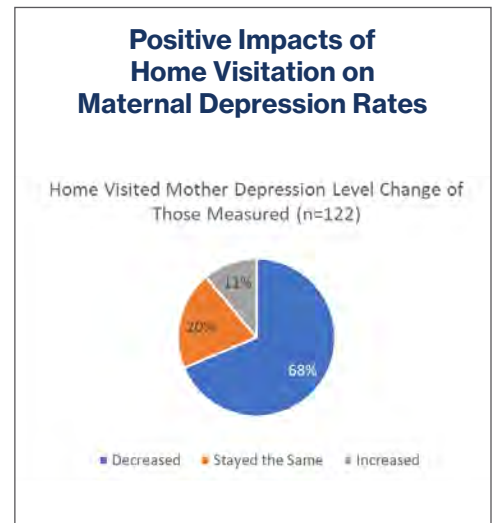
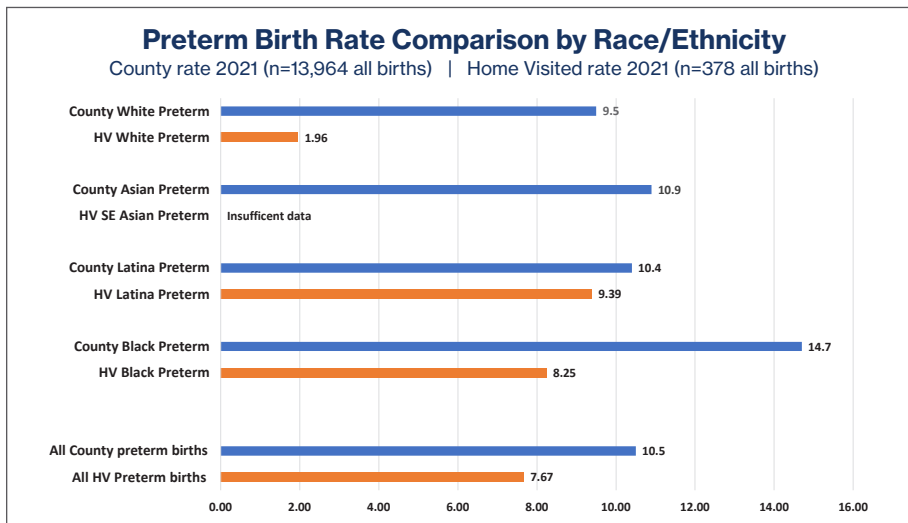
Because the mix of indicators used is determined by the partners involved, contributing indicators play an important role. This data is often more readily available and beneficial to move the work toward improved outcomes. Importantly, public agencies, which play an essential role in multiple initiatives, are best positioned to track contributing indicators. The C2C Preconception to Age 5 Network has multiple projects and programs underway in these four focus areas:



The network has identified several shared contributing indicators:

- **Staff race/ethnicity rates compared to population served race/ethnicity rates**
- **Pre-term birth rate as compared to county preterm birth rate**
- **Maternal depression**

A leading initiative within the larger Preconception to Age 5 effort, the Home Visitation Network compares the rates of preterm birth countywide to rates of preterm birth for those who receive home visitation.



Early Childhood Care and Education (ECE) also plays a leading role in the Preconception to Age 5 Network and tracks several contributing indicators connected to workforce development.

## Early Childhood Education Contributing Indicators:

- **Professional development/college credit completion of workforce**
- **Licensed providers**
- **Quality Rating Improvement System measures**

**ECE Career Pathways Participants**  
**Number Obtaining Degrees (A.A., B.A., M.A.)**  
**Number of FFN Achieving their License (who went through the project)**  
**Participants Working in QRIS Involved Programs**

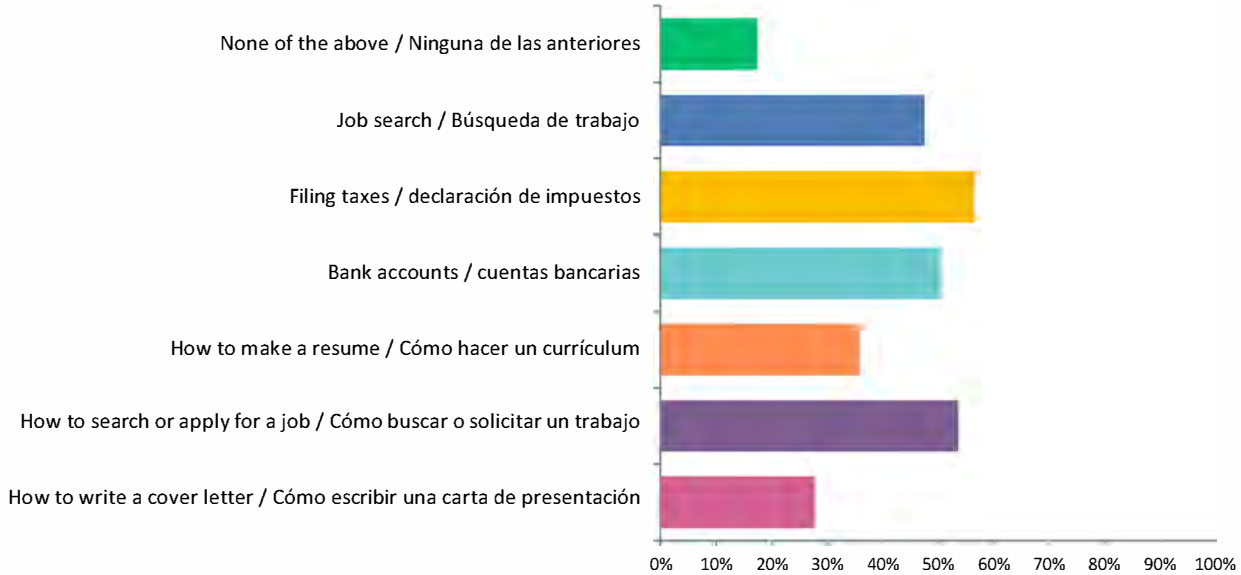
	FY 20-21	FY 21-22	Present Fresno County Total FY 22-23
ECE Career Pathways Participants	481	523	485 (as of Dec 2022)
Number Obtaining Degrees (A.A., B.A., M.A.)	13	25	19 (currently have this as their goal)
Number of FFN Achieving their License (who went through the project)	1	1	20 (currently have this as their goal)
Participants Working in QRIS Involved Programs	n/a	437	394

# QUALITATIVE DATA

To get a more complete picture of what is happening on the ground it is important to collect information directly from the community. The Fresno Coalition for Digital Inclusion gathers qualitative data to identify specific needs associated with internet access. Both qualitative numbers and the end user needs and experience are essential to understand what actions, decisions and policy changes need to be implemented to improve outcomes.

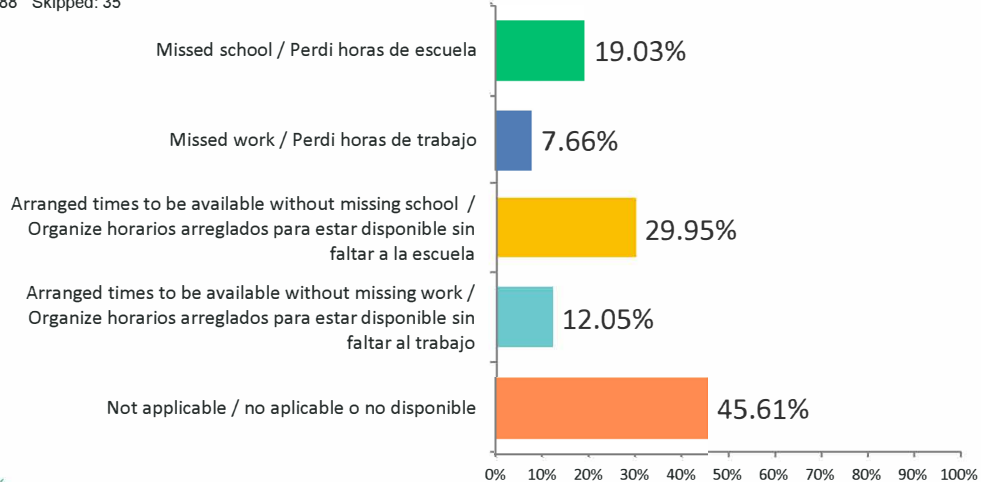
**What do you feel you need that is not provided in school regarding digital access or use? (Check all that apply.)**  
**¿Qué siente que necesita que no se proporciona en la escuela con respecto al acceso o uso digital? (Marque todo lo que corresponda)**  
**Youth Ages 12-17 Only**

Answered: 911 Skipped: 12



**If you needed to help interpret for your family, did you arrange times to be available so it was not during school/work or did you have scheduling conflicts?**  
**Si necesitaba ayudar a interpretar para su familia, ¿organizó horarios para estar disponible de manera que no fuera durante horas de escuela o el trabajo o tuvo conflictos de horario?**  
**YOUTH AGES 12-17 ONLY**

Answered: 888 Skipped: 35





## MISSION

**Fresno C2C works to build equitable systems and inclusive economic mobility for children and families through cross-sector partnership, collaboration and measured improvement.**

## VISION

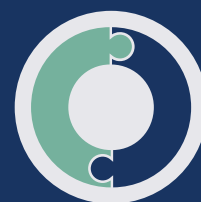
**Trust, relationships and shared purpose make just and equitable systems possible. Cross-sector innovation, connectivity and collaboration are strong and ongoing. Working together we link, align and leverage resources.**



“With the responsibility of our local public health and what it means to effectively reach people where they are, qualitative data that describes their needs and experiences is essential to making good decisions about how to best deliver services.”

- David Luchini, Director  
Fresno County Department of Public Health





**CRADLE TO CAREER**  
FRESNO COUNTY

[fresnoc2c.org](http://fresnoc2c.org)



*fresno county*  
**superintendent of schools**  
Dr. Michele Cantwell-Copher, Superintendent



@FresnoC2C